

目 录

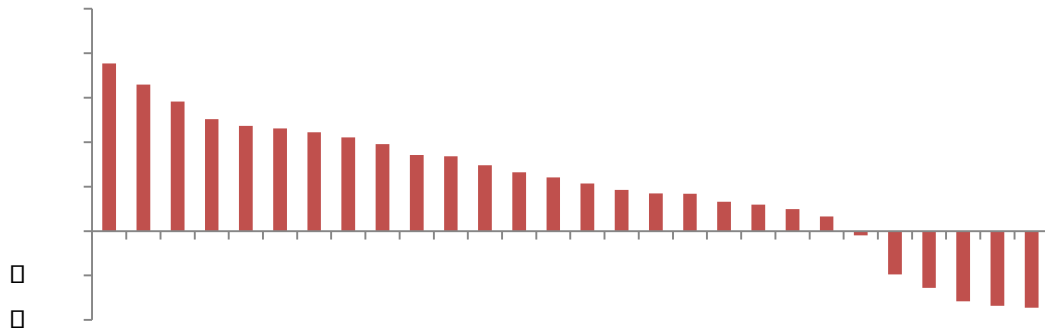
.....	2
.....	2
.....	2
.....	3
.....	3
.....	3
30	4
.....	4
.....	4
.....	5
30 A	5
.....	5
.....	6
1 2021	6
2	7
3	8
4 2020	9
5	9
6	10

	3696.17	1.12%
	15823.11	-0.87%
	10684.73	-1.05%
	3285.53	-3.76%
300	5778.84	-0.50%
	30644.73	1.56%
500	3906.71	-0.71%
(WIND 2021-2-18 2021-2-19)		

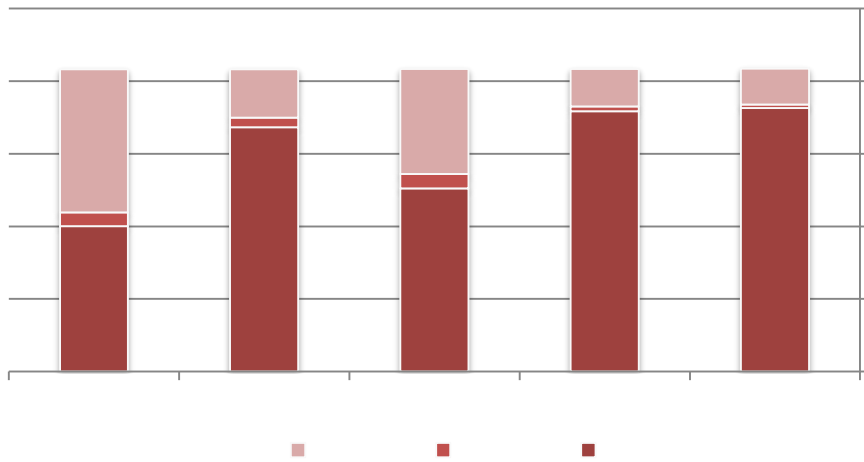
2021-2-18 2021-2-19 A

 1.12% 3696.17 0.87% 15823.11

 3.76% 3285.53



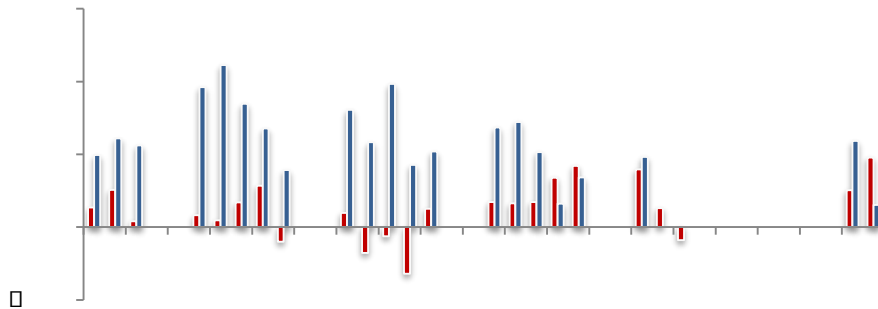
□ □ □ □



□ □ □ □

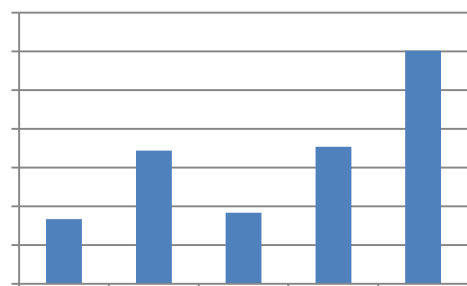
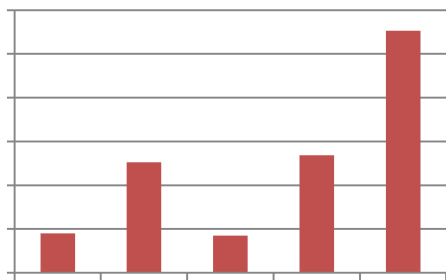
	146.26	178.84
	487.25	876.21
	886.82	3982.45

□ □



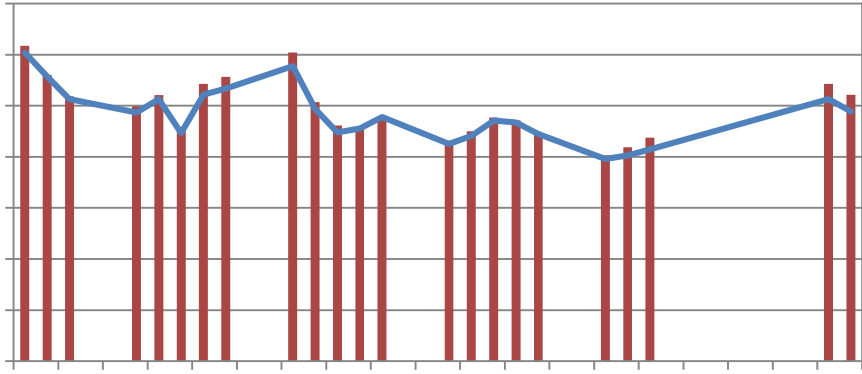
□ □

QFII	26950.38	2.92%	3.90%
	26931.64	2.92%	3.91%
	18.73	0.00%	0.0027%



□ □

30 A



□ □

“

”

“

”

757

"

"

1 2021

2 21

2021

21

18

"

"

1

"

"

2 2021

1.3

3 2021

2025

4

5

6

7

5G

8

9

10

Wi nd

2

"

"

3

		1		CPI	8
	1.4%	CPI	1.4%		1
CPI	0.6%	6		1	CPI
		0.9			1.30%
		2%			

2008

2%

4

2020

GDP 2020 2% 2989

2020 5338
4% 2019

2020 1162 1453 44%
47%

1034

78%

2020 1096 12%
2130 37%

5

2000 MLF 2.95% 18 200

2.2%

2000

MLF 2800

2600

" "

7

DR007

"

DR007

DR007

"

2 2000 MLF
11

MLF
1

1

AAA

MLF

"

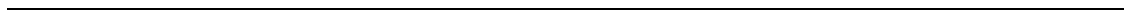
"

6

2021

"

"



		2	17		10	2021
		78				
		3			35	27
	17	2	11	17		
8210				28.7%		1220
				135%		
	54.9%					
2021						